



# CAFFÈ - Didiessa Frog

## COFFEE - Didiessa Frog



Scocche - Shells



**DFR002ARA** ▲

Scocca SX e DX di colore arancione per Frog

Left and right orange body for Frog

Didiesse FR002 FR040



**DFR002AVO** ▲

Scocca SX e DX di colore avorio per Frog

Left and right ivory body for Frog

Didiesse FR002 FR040



**DFR002BIA** ▲

Scocca SX e DX di colore bianco per Frog

Left and right white body for Frog

Didiesse FR002 FR040



**DFR002BLM** ▲

Scocca SX e DX di colore blu miami per Frog

miami blue left and right body for Frog

Didiesse FR002 FR040



**DFR002FUX** ▲

Scocca SX e DX di colore fucsia per Frog

Left and right fuchsia body for Frog

Didiesse FR002 FR040



**DFR002GIA** ▲

Scocca SX e DX di colore giallo limone per Frog

Left and right lemon yellow body for Frog

Didiesse FR002 FR040



**DFR002NER** ▲

Scocca SX e DX di colore nero per Frog

Left and right black body for Frog

Didiesse FR002 FR040



**DFR002REL** ▲

Scocca SX e DX di colore rosso elettrico per Frog

SX and DX body in electric red for Frog

Didiesse FR002 FR040

**DFR001** ▲

Montante SX e DX per Frog

Left and right upright for Frog

Didiesse

FR001 FR036

**DFR013** ▲

Targhetta ovale per Frog

Oval plate for Frog

Didiesse

FR013

**DFR02728** ▲

Base con piedini per Frog

Base with feet for Frog

Didiesse

FR027 FR028

**DFR012** ▲

Coperchio serbatoio acqua nero per Frog

Black water tank cover for Frog

Didiesse

FR012

**DFR030** ▲

Griglia vaschetta raccogliocce per Frog

Drip tray grid for Frog

Didiesse

FR030

**DFR029** ▲

Vaschetta raccogliocce per Frog

Drip tray for Frog

Didiesse

FR029

**DFR016** ▲

Leva cromata per Frog

Chrome lever for Frog

Didiesse

FR016

**DFR017** ▲

Pomello per Frog

Knob for Frog

Didiesse

FR017



### DFR003 ▲

Interruttore bipolare con spia rosso per Frog

Bipolar switch with red light for Frog

Didiesse

FR003



### DFR004 ▲

Pulsante spia bipolare blu per Frog

Blue bipolar pilot light button for Frog

Didiesse

FR004



### DFR038 ▲

Interruttore spia bipolare arancione erogazione per Frog

Orange bipolar indicator light switch for Frog

Didiesse

FR038



### DFR039 ▲

Interruttore spia bipolare verde accensione per Frog

Green bipolar light switch for Frog

Didiesse

FR039



### DFR019 ▲

Termostato pilota 95° per Frog

95 ° pilot thermostat for Frog

Didiesse

FR019



### DFR020 ▲

Termostato sicurezza 165° per Frog

Safety thermostat 165 ° for Frog

Didiesse

FR020



### DFR053 ▲

Termostato pilota vapore 155° per Frog

155 ° steam pilot thermostat for Frog

Didiesse

FR053



### DFR091 ▲

Sonda termistore assemblato per Frog

Thermistor probe assembled for Frog

Didiesse

FR091

## Elettrovavole e Raccordi - Solenoids and fittings

**DFR007** ▲

Elettrovavola 3 vie 230V - 50Hz verticale  
frog revolution per Frog

3-way solenoid valve 230V - 50Hz vertical  
frog revolution for Frog

Didiese

FR007

**DFR037** ▲

Elettrovavola 3 vie 230V - 50Hz tipo  
orizzontale per Frog

3-way solenoid valve 230V - 50Hz horizontal  
type for Frog

Didiese

FR037

**DFR011** ▲

Raccordo 90° 1/8 metallo per Frog

90 ° 1/8 metal fitting for Frog

Didiese

FR011

**DFR056** ▲

Raccordo vapore a riscaldamento rapido ad  
S 1/8 per tubo teflon 3x5 per Frog

S 1/8 quick-heat steam connection for  
3x5 Teflon tube for Frog

Didiese

FR056

**DFR062** ▲

Raccordo 90° 1/8 ff per Frog

90 ° 1/8 ff fitting for Frog

Didiese

FR062

**DFR010** ▲

Siluro in ottone per Frog

Brass torpedo for Frog

Didiese

FR010

**DFR006** ▲

Pompa **ARS** 230V- 53W-50Hz 15 bar  
erogazione caffè per Frog

**ARS** pump 230V- 53W-50Hz 15 bar coffee  
dispensing for Frog

Didiese

DF006

**DFR008** ▲

Pipetta gomma per Frog

Rubber pipette for Frog

Didiese

FR008



**DFR022** ▲

Guarnizione O-ring cialda 147 viton nero  
42,86x3,53 per Frog

Waffle O-ring seal 147 black viton  
42,86x3,53 for Frog

Didiesse

FR022



**DFR009** ▲

O-Ring siluro per Frog

Torpedo O-Ring for Frog

Didiesse

FR009



**DFR058** ▲

O-Ring viton vapore / O-Ring coperchio  
termoblocco 94,92 x 2,62per Frog

Viton Steam O-Ring / Thermoblock O-Ring  
94.92 x 2.62 for Frog

Didiesse

FR058



**DFR025** ▲

Boccola per Frog

Bushing for Frog

Didiesse

FR025



**DFR034** ▲

Portacialda per Frog

Pod holder for Frog

Didiesse

FR034



**DFR033** ▲

Beccuccio cromato per Frog

Chrome spout for Frog

Didiesse

FR033



**DFR065** ▲

Blocchetto in alluminio per lancia vapore  
Frog

Aluminum block for Frog

Didiesse

FR065

**DFR082**

Resistenza a incastro 600W 230V  
tipo U Revolution per Frog

Interlocking resistance 600W 230V  
type U Revolution for Frog

Didiesse

FR082

**DFRIS59**

Resistenza termoblocco 500W 220V Baby  
Frog

Heating element 500W 220V Baby Frog

Didiesse

IS59

**DFR052**

Resistenza a cartuccia 230V - 1200W  
vapore per Frog

230V - 1200W steam cartridge heating  
element for Frog

Didiesse

FR052

**DFR083**

Tappo premialda Evolution per Frog

Evolution pressing cap for Frog

Didiesse

FR083

**DFR049**

Termoblocco rev. + resistenza base  
44 Ø 220V per Frog

Thermoblock rev. + base resistance  
44 Ø 220V for Frog

Didiesse

FR049

**DFR125**

Filtro portacialda Ø 38mm per Frog

Pod holder filter Ø 38mm for Frog

Didiesse

FR125

**DFR035**

Filtro portacialda Ø 44mm per Frog

Pod holder filter Ø 44mm for Frog

Didiesse

FR035

**DFR031**

Dado in plastica per portacialda per Frog

Plastic nut for pod holder for Frog

Didiesse

FR031





**DFR063** ▲

Tubo PTFE 3x5mm al metro per Frog

PTFE tube 3x5mm per meter for Frog

Didiesse

FR063



**DFR064** ▲

Tubo PTFE 4x6mm al metro per Frog

PTFE tube 4x6mm per meter for Frog

Didiesse

FR064



**DFR072** ▲

Tubo silicone 4x7mm al metro per Frog

Silicone hose 4x7mm per meter for Frog

Didiesse

FR072



**DFR076** ▲

Guida con piastrino per Frog

Guide with plate for Frog

Didiesse

FR076



**DFR014** ▲

Forcella gruppo per Frog

Group fork for Frog

Didiesse

FR014



**DFR015** ▲

Biella per Frog

Connecting rod for Frog

Didiesse

FR015



**DFR005** ▲

Cuffietta leva per Frog

Lever hood for Frog

Didiesse

FR005



**DFR021** ▲

Telaio per Frog

Frame for Frog

Didiesse

FR021

**DFR032** ▲

Spessore calibrato per Frog

Thickness calibrated for Frog

Didiesse

FR032

**DFR103** ▲

Porta accessori destro / sinistro per Frog

Right / left accessory holder for Frog

Didiesse

FR103



**DBF023N**

Scocca sinistra e destra nera lucida per BabyFrog

Left and right black glossy body for BabyFrog

Didiesse

BF023



**DBF023BN**

Scocca sinistra e destra bianco lucido per BabyFrog

Left and right white body for BabyFrog

Didiesse

BF023



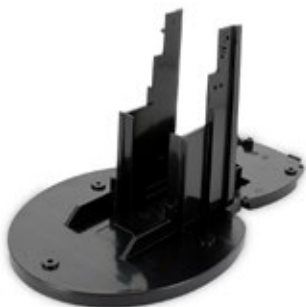
**DBF023R**

Scocca sinistra e destra rosso lucido per BabyFrog

Left and right red glossy body for BabyFrog

Didiesse

BF023



**DBF006**

Base telaio BabyFrog

BabyFrog frame base

Didiesse

BF006



**DBF007**

Vaschetta BabyFrog

BabyFrog tub

Didiesse

BF007



**DBF008**

Griglia vasc. BabyFrog

BabyFrog tray grid

Didiesse

BF008



**DBF009**

Alloggio tassello logo BabyFrog

BabyFrog logo dowel housing

Didiesse

BF009



**DBF011**

Boccola leva BabyFrog

BabyFrog lever bush

Didiesse

BF011

**DBF004**

Serbatoio BabyFrog

BabyFrog tank

Didiesse

BF004

**DBF005**

Tappo serbatoio BabyFrog

BabyFrog tank cap

Didiesse

BF005

**DBF012**

Pomello BabyFrog

BabyFrog Knob

Didiesse

BF012

**DBF013**

Leva BabyFrog

BabyFrog lever

Didiesse

BF013

**DBF102**

Assemblato pulsante erogazione sinistro BabyFrog

BabyFrog left dispensing button assembled

Didiesse

BF102

**DBF103**

Assemblato pulsante destro BabyFrog

Assembled right button BabyFrog

Didiesse

BF103



**DD054** ▲

Termoblocco con resistenza BabyFrog

Thermoblock with BabyFrog resistance

Didiesse

D054



**DBF044** ▲

Termoblocco inferiore per diffusore BabyFrog

Lower thermoblock for BabyFrog diffuser

Didiesse

BF044



**DBF046** ▲

Alloggio portacialda BabyFrog

BabyFrog pod holder housing

Didiesse

BF046



**DBF047** ▲

Portacialda asportabile BabyFrog

BabyFrog removable pod holder

Didiesse

BF047



**DBF041** ▲

Diffusore in palstica BabyFrog

BabyFrog plastic diffuser

Didiesse

BF041