



CAFFÈ - Didiessa Frog

COFFEE - Didiessa Frog



Scocche - Shells



DFR002ARA ▲

Scocca SX e DX di colore arancione per Frog

Left and right orange body for Frog

Didiesse FR002 FR040



DFR002AVO ▲

Scocca SX e DX di colore avorio per Frog

Left and right ivory body for Frog

Didiesse FR002 FR040



DFR002BIA ▲

Scocca SX e DX di colore bianco per Frog

Left and right white body for Frog

Didiesse FR002 FR040



DFR002BLM ▲

Scocca SX e DX di colore blu miami per Frog

miami blue left and right body for Frog

Didiesse FR002 FR040



DFR002FUX ▲

Scocca SX e DX di colore fucsia per Frog

Left and right fuchsia body for Frog

Didiesse FR002 FR040



DFR002GIA ▲

Scocca SX e DX di colore giallo limone per Frog

Left and right lemon yellow body for Frog

Didiesse FR002 FR040



DFR002NER ▲

Scocca SX e DX di colore nero per Frog

Left and right black body for Frog

Didiesse FR002 FR040



DFR002REL ▲

Scocca SX e DX di colore rosso elettrico per Frog

SX and DX body in electric red for Frog

Didiesse FR002 FR040

**DFR001** ▲

Montante SX e DX per Frog

Left and right upright for Frog

Didiesse

FR001 FR036

**DFR013** ▲

Targhetta ovale per Frog

Oval plate for Frog

Didiesse

FR013

**DFR02728** ▲

Base con piedini per Frog

Base with feet for Frog

Didiesse

FR027 FR028

**DFR012** ▲

Coperchio serbatoio acqua nero per Frog

Black water tank cover for Frog

Didiesse

FR012

**DFR030** ▲

Griglia vaschetta raccogliocce per Frog

Drip tray grid for Frog

Didiesse

FR030

**DFR029** ▲

Vaschetta raccogliocce per Frog

Drip tray for Frog

Didiesse

FR029

**DFR016** ▲

Leva cromata per Frog

Chrome lever for Frog

Didiesse

FR016

**DFR017** ▲

Pomello per Frog

Knob for Frog

Didiesse

FR017



DFR003 ▲

Interruttore bipolare con spia rosso per Frog

Bipolar switch with red light for Frog

Didiesse

FR003



DFR004 ▲

Pulsante spia bipolare blu per Frog

Blue bipolar pilot light button for Frog

Didiesse

FR004



DFR038 ▲

Interruttore spia bipolare arancione erogazione per Frog

Orange bipolar indicator light switch for Frog

Didiesse

FR038



DFR039 ▲

Interruttore spia bipolare verde accensione per Frog

Green bipolar light switch for Frog

Didiesse

FR039



DFR019 ▲

Termostato pilota 95° per Frog

95 ° pilot thermostat for Frog

Didiesse

FR019



DFR020 ▲

Termostato sicurezza 165° per Frog

Safety thermostat 165 ° for Frog

Didiesse

FR020



DFR053 ▲

Termostato pilota vapore 155° per Frog

155 ° steam pilot thermostat for Frog

Didiesse

FR053



DFR091 ▲

Sonda termistore assemblato per Frog

Thermistor probe assembled for Frog

Didiesse

FR091

Elettrovavole e Raccordi - Solenoids and fittings

**DFR007** ▲

Elettrovavola 3 vie 230V - 50Hz verticale
frog revolution per Frog

3-way solenoid valve 230V - 50Hz vertical
frog revolution for Frog

Didiese

FR007

**DFR037** ▲

Elettrovavola 3 vie 230V - 50Hz tipo
orizzontale per Frog

3-way solenoid valve 230V - 50Hz horizontal
type for Frog

Didiese

FR037

**DFR011** ▲

Raccordo 90° 1/8 metallo per Frog

90 ° 1/8 metal fitting for Frog

Didiese

FR011

**DFR056** ▲

Raccordo vapore a riscaldamento rapido ad
S 1/8 per tubo teflon 3x5 per Frog

S 1/8 quick-heat steam connection for
3x5 Teflon tube for Frog

Didiese

FR056

**DFR062** ▲

Raccordo 90° 1/8 ff per Frog

90 ° 1/8 ff fitting for Frog

Didiese

FR062

**DFR010** ▲

Siluro in ottone per Frog

Brass torpedo for Frog

Didiese

FR010

**DFR006** ▲

Pompa **ARS** 230V- 53W-50Hz 15 bar
erogazione caffè per Frog

ARS pump 230V- 53W-50Hz 15 bar coffee
dispensing for Frog

Didiese

DF006

**DFR008** ▲

Pipetta gomma per Frog

Rubber pipette for Frog

Didiese

FR008



DFR022 ▲

Guarnizione O-ring cialda 147 viton nero
42,86x3,53 per Frog

Waffle O-ring seal 147 black viton
42,86x3,53 for Frog

Didiesse

FR022



DFR009 ▲

O-Ring siluro per Frog

Torpedo O-Ring for Frog

Didiesse

FR009



DFR058 ▲

O-Ring viton vapore / O-Ring coperchio
termoblocco 94,92 x 2,62per Frog

Viton Steam O-Ring / Thermoblock O-Ring
94.92 x 2.62 for Frog

Didiesse

FR058



DFR025 ▲

Boccola per Frog

Bushing for Frog

Didiesse

FR025



DFR034 ▲

Portacialda per Frog

Pod holder for Frog

Didiesse

FR034



DFR033 ▲

Beccuccio cromato per Frog

Chrome spout for Frog

Didiesse

FR033



DFR065 ▲

Blocchetto in alluminio per lancia vapore
Frog

Aluminum block for Frog

Didiesse

FR065

**DFR082**

Resistenza a incastro 600W 230V
tipo U Revolution per Frog

Interlocking resistance 600W 230V
type U Revolution for Frog

Didiesse

FR082

**DFRIS59**

Resistenza termoblocco 500W 220V Baby
Frog

Heating element 500W 220V Baby Frog

Didiesse

IS59

**DFR052**

Resistenza a cartuccia 230V - 1200W
vapore per Frog

230V - 1200W steam cartridge heating
element for Frog

Didiesse

FR052

**DFR083**

Tappo premialda Evolution per Frog

Evolution pressing cap for Frog

Didiesse

FR083

**DFR049**

Termoblocco rev. + resistenza base
44 Ø 220V per Frog

Thermoblock rev. + base resistance
44 Ø 220V for Frog

Didiesse

FR049

**DFR125**

Filtro portacialda Ø 38mm per Frog

Pod holder filter Ø 38mm for Frog

Didiesse

FR125

**DFR035**

Filtro portacialda Ø 44mm per Frog

Pod holder filter Ø 44mm for Frog

Didiesse

FR035

**DFR031**

Dado in plastica per portacialda per Frog

Plastic nut for pod holder for Frog

Didiesse

FR031



DFR063 ▲

Tubo PTFE 3x5mm al metro per Frog

PTFE tube 3x5mm per meter for Frog

Didiesse

FR063



DFR064 ▲

Tubo PTFE 4x6mm al metro per Frog

PTFE tube 4x6mm per meter for Frog

Didiesse

FR064



DFR072 ▲

Tubo silicone 4x7mm al metro per Frog

Silicone hose 4x7mm per meter for Frog

Didiesse

FR072



DFR076 ▲

Guida con piastrino per Frog

Guide with plate for Frog

Didiesse

FR076



DFR014 ▲

Forcella gruppo per Frog

Group fork for Frog

Didiesse

FR014



DFR015 ▲

Biella per Frog

Connecting rod for Frog

Didiesse

FR015



DFR005 ▲

Cuffietta leva per Frog

Lever hood for Frog

Didiesse

FR005

**DFR021** ▲

Telaio per Frog

Frame for Frog

Didiesse

FR021

**DFR032** ▲

Spessore calibrato per Frog

Thickness calibrated for Frog

Didiesse

FR032

**DFR103** ▲

Porta accessori destro / sinistro per Frog

Right / left accessory holder for Frog

Didiesse

FR103



DBF023N

Scocca sinistra e destra nera lucida per BabyFrog

Left and right black glossy body for BabyFrog

Didiesse

BF023



DBF023BN

Scocca sinistra e destra bianco lucido per BabyFrog

Left and right white body for BabyFrog

Didiesse

BF023



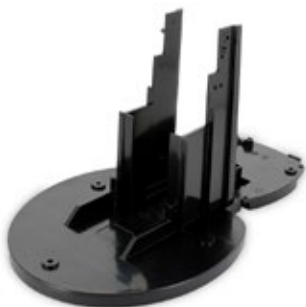
DBF023R

Scocca sinistra e destra rosso lucido per BabyFrog

Left and right red glossy body for BabyFrog

Didiesse

BF023



DBF006

Base telaio BabyFrog

BabyFrog frame base

Didiesse

BF006



DBF007

Vaschetta BabyFrog

BabyFrog tub

Didiesse

BF007



DBF008

Griglia vasc. BabyFrog

BabyFrog tray grid

Didiesse

BF008



DBF009

Alloggio tassello logo BabyFrog

BabyFrog logo dowel housing

Didiesse

BF009



DBF011

Boccola leva BabyFrog

BabyFrog lever bush

Didiesse

BF011

**DBF004**

Serbatoio BabyFrog

BabyFrog tank

Didiesse

BF004

**DBF005**

Tappo serbatoio BabyFrog

BabyFrog tank cap

Didiesse

BF005

**DBF012**

Pomello BabyFrog

BabyFrog Knob

Didiesse

BF012

**DBF013**

Leva BabyFrog

BabyFrog lever

Didiesse

BF013

**DBF102**

Assemblato pulsante erogazione sinistro BabyFrog

BabyFrog left dispensing button assembled

Didiesse

BF102

**DBF103**

Assemblato pulsante destro BabyFrog

Assembled right button BabyFrog

Didiesse

BF103



DD054 ▲

Termoblocco con resistenza BabyFrog

Thermoblock with BabyFrog resistance

Didiesse

D054



DBF044 ▲

Termoblocco inferiore per diffusore BabyFrog

Lower thermoblock for BabyFrog diffuser

Didiesse

BF044



DBF046 ▲

Alloggio portacialda BabyFrog

BabyFrog pod holder housing

Didiesse

BF046



DBF047 ▲

Portacialda asportabile BabyFrog

BabyFrog removable pod holder

Didiesse

BF047



DBF041 ▲

Diffusore in palstica BabyFrog

BabyFrog plastic diffuser

Didiesse

BF041